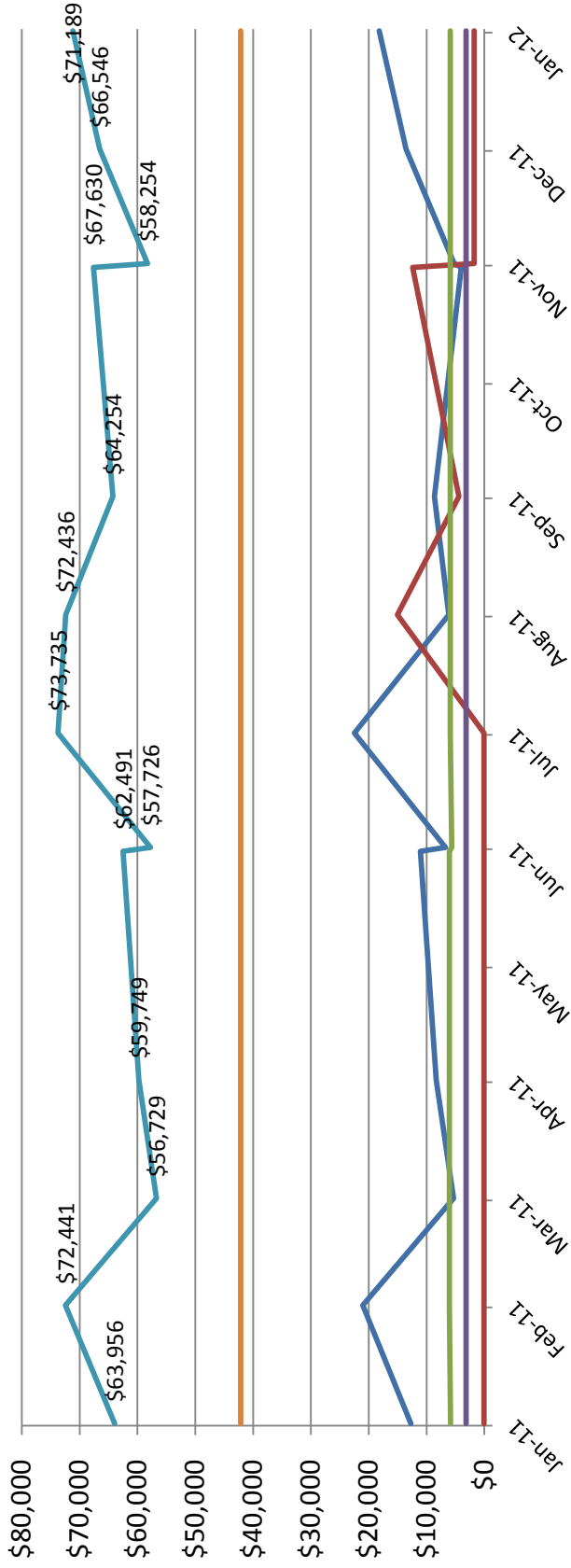


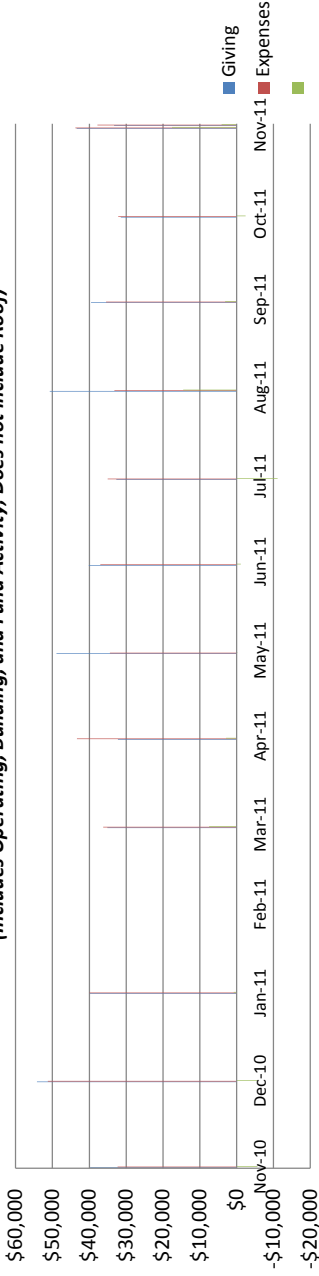
Holy Trinity Lutheran Church  
Middleburg Bank Balances

**Middleburg Account Balances - Prior 13 Months**  
*Reflects Month-End Account Balances*

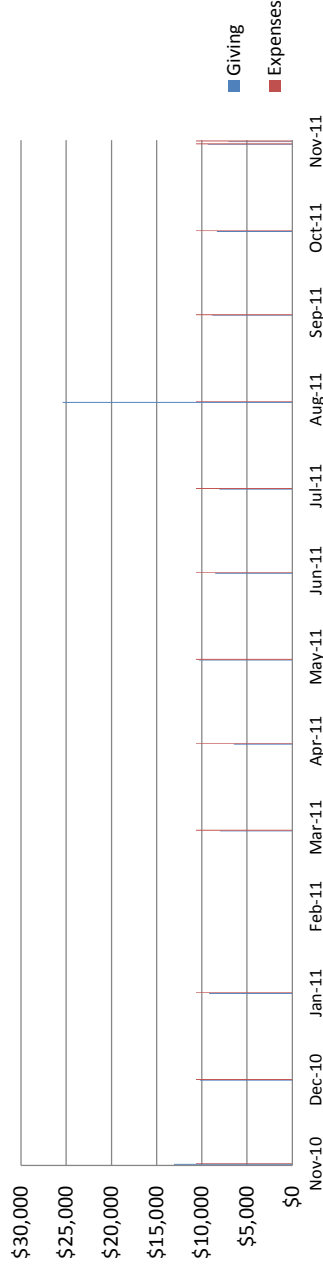


	Jan-11	Feb-11	Mar-11	Apr-11	May-11	Jun-11	Jul-11	Aug-11	Sep-11	Oct-11	Nov-11	Dec-11	Jan-12
General	\$12,733	\$21,019	\$5,306	\$8,326	\$11,066	\$6,721	\$22,476	\$6,168	\$8,619	\$3,991	\$5,249	\$13,540	\$18,183
Building	\$53	\$53	\$53	\$53	\$53	\$53	\$53	\$15,058	\$4,424	\$12,427	\$1,792	\$1,793	\$1,793
Organ	\$5,857	\$6,055	\$6,055	\$6,055	\$6,055	\$5,635	\$5,888	\$5,890	\$5,890	\$5,890	\$5,890	\$5,890	\$5,890
Youth Dir	\$3,153	\$3,154	\$3,155	\$3,155	\$3,157	\$3,157	\$3,158	\$3,160	\$3,160	\$3,162	\$3,163	\$3,163	\$3,163
Roof	\$42,160	\$42,160	\$42,160	\$42,160	\$42,160	\$42,160	\$42,160	\$42,160	\$42,160	\$42,160	\$42,160	\$42,160	\$42,160
Total	\$63,956	\$72,441	\$56,729	\$59,749	\$62,491	\$57,726	\$73,735	\$72,436	\$64,254	\$67,630	\$58,254	\$66,546	\$71,189

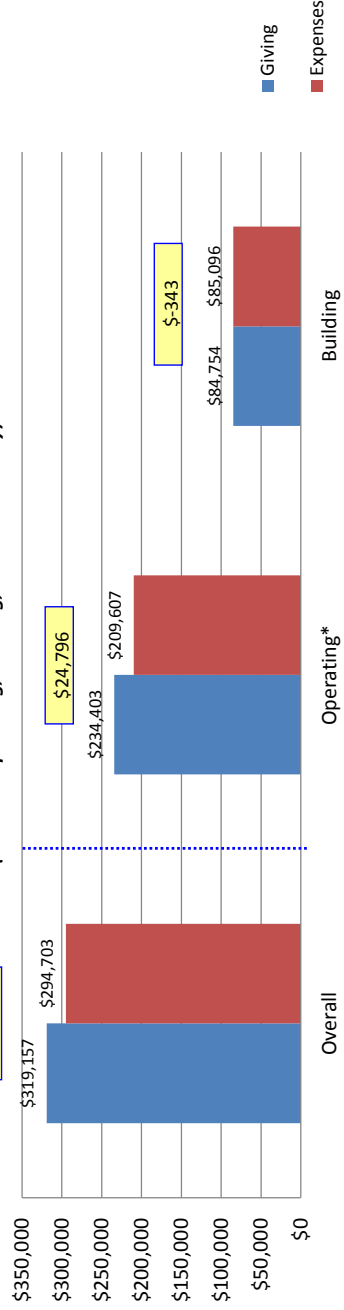
### Overall Giving vs. Expenses - Last 13 Months *(Includes Operating, Building, and Fund Activity; Does not include Roof)*



### Building Giving vs. Expenses - Last 13 Months



### Giving vs. Expenses - YTD *(Includes Operating, Building, and Fund Activity)*



\*Operating includes General and Accumulating Fund activity. Does not include Roof.

<b>Contributions</b>	<b>Jan 2012</b>	<b>2012 Total</b>
<b>Operating</b>	\$34,494	\$34,494
<b>Mortgage</b>	\$8,365	\$8,365
<b>Total Contributions</b>	\$42,859	\$42,859
<b>Expenses</b>		
<b>Operating - Not including mortgage interest</b>	\$27,808	\$27,808
<b>Mortgage - Principal and interest</b>	\$10,637	\$10,637
<b>Total Expenses</b>	\$38,445	\$38,445
<b>Ahead/(Behind)</b>		
<b>Operating</b>	\$6,686	\$6,686
<b>Mortgage</b>	(\$2,272)	(\$2,272)
<b>Total Ahead/(Behind)</b>	\$4,414	\$4,414